



# *Captain Timothy J. Kelley*

His Ships and His Times

*Admin Stuff*





To Linda, Stu, Matt & Elise!

***THANK YOU!!!***

***FOR THIS JOYOUS GATHERING!***

# *Kelley Family on Web*

- Facebook:
  - Search for “Relations of Captain Timothy Kelley”
  - <http://www.facebook.com/group.php?gid=170879180941>
  - PLEASE! Upload photos from this reunion!!!
- Family Kelley web site
  - <http://www.familykelley.org>
  - Will post these slides there in .PDF format off Capt. Kelley page
- Apologies!!!
  - The Family has sent us much wonderful family information
  - Haven't gotten it on-line yet
  - Haven't forgotten it either
  - SORRY to be so slow!

# *Family Directory*

## Family Christmas card list!

- PLEASE update your contact information at:  
<http://www.familykelley.org>
- Go to “Family Directory” page
  - Fill in form & hit “send” – this will generate an e-mail
  - Attached to e-mail will be a funky file
  - Funky file is what I use to update directory
- To get copy of electronic directory, e-mail me at:
  - <mailto:danielkelley@pcisys.net>
  - You’ll get a .CSV file (Comma Separated Values)
  - Can be imported into MS Outlook or a spreadsheet
- Directory information is NEVER posted to the web



# *Captain Timothy J. Kelley*

His Ships and His Times

# *Briefing Purposes*

- To get a feel for the man and his family
- To put Captain Kelley into the context of his times
- To suggest lines of research to pursue
  - Prior to Coachford, County Cork, Ireland, we know nothing
  - We do not know all the places the family lived
  - We do not have information on all siblings
- Most important:
  - There are whole branches of our family we know nothing about!!!
  - Let us find them and welcome them!

# *Newspaper Clippings*

- Throughout, I mention getting newspaper clippings
- Many records in Ireland were lost in a big fire
  - Newspaper accounts & tombstones may be all that is left
- Find someone's tombstone
  - Get the date of date of death
  - Get the obituary of that person from the newspaper
  - Find where and when they were born
  - Get the newspaper clipping of the birth announcement
  - Discover who their parents were
  - Perhaps, their parents are buried in that town / birth town
  - Find the tombstones of those people
  - Repeat if possible



# *Captain Kelley's Journals*

- FYI: Captain Timothy Kelley kept a journal
  - From age ~21 to his death
- These journals are in the custody of the
  - Wisconsin Maritime Museum in Manitowoc, WI
  - <http://www.wisconsinmaritime.org>
  - I have not yet accessed these journals yet
    - This briefing created from online sources
- We owe the museum our thanks for preserving this history
  - Donations accepted online



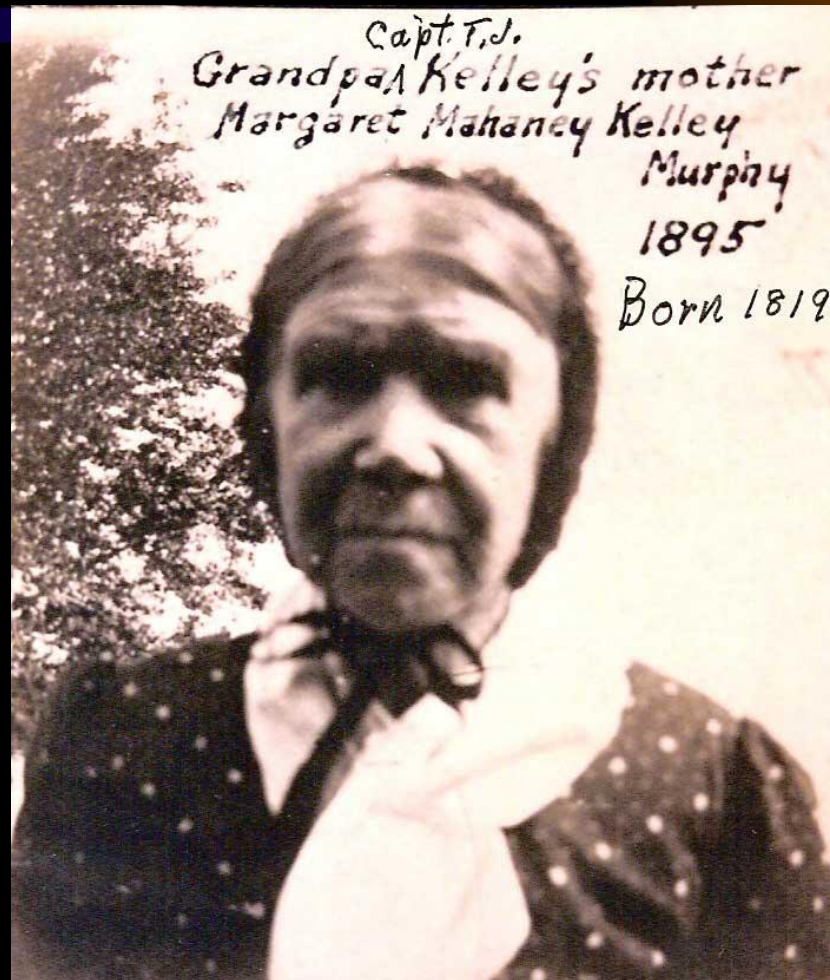
*THE STORY BEGINS . . .*

# *Ireland and Emigration*

- 18??: John Kelley & Margaret Mahoney Mahaney married . . . in Coachford, County Cork, Ireland?
  - Patrick J. Kelley (b. 1839) – School teacher, masonry contractor
  - Margaret Kelley (b. 1843) – 18??: Married Mr. Ellard (who?)
  - Joana Kelley (b. 1845) – 18??: Married John Egan (who?, where?)
  - Can we get newspaper announcements? Find tombstones.
- 1841: Iron ore discovered on S. shore of Lake Superior
- 1846-1848: Mexican American war
- 1846-1851: Irish potato famine
- 1848: The family emigrates to the U.S.A.
- 1849: Timothy J. Kelley was born in Springfield, MA
  - We have a birth date? Let's get a newspaper birth announcement!

Historic  
Milestones

# *Captain Kelley's Mother*



# Manitowoc!

- 18??: Mary Kelley was born (where?)
  - 18??: Married John E. Hart (who?), moved to Chicago
- 18??: Kelley family was living in New Jersey (where?)
- 1856: Kelley family relocated to Manitowoc, Wi
  - April 15<sup>th</sup>: steamer *Cleveland* arrives in Manitowoc
  - Captain Kelley's first ship! (~6 years old)
- February 1858: John Kelley died
  - Buried at Manitowoc Rapids, Wi
  - Can we find a newspaper clipping?
  - And perhaps find out where he was born!
  - From there, perhaps find his parents in Ireland!!

# *Manitowoc II*

- 18??: Margaret Mahaney Mahoney re-married (where?)
  - Mr. Patrick Murphy (who?)
  - Is there a newspaper clipping of the marriage?
- 1861: U.S. Civil War began
- 1862: Captain Kelley left home for the Great Lakes
  - Age ~12 or 13: became a cabin boy



Common attitude c.1860

**And The Adventure Begins!!!!**

# *Captain Kelley as Cabin Boy*

- 1862 through 1865 (during the U.S. Civil War)
  - Schooner "Ellen"
  - Schooner "Free Mason"
    - **Sank** in 1867 in the Detroit River, 3 lives lost
  - Schooner "Erie"
    - **Wrecked** in 1868
  - Schooner(?) "Wayne"
    - **Sank** in 1877 at Oswego
  - Schooner "Experiment"
    - **Wrecked** in Manitowoc in 1864 – Was Capt. Kelley aboard?
  - Schooner(?) "Board of Trade"
  - Schooner(?) "William Quage"
- Tradition was to sign on a ship for one voyage at a time

# Reality Check

- Notice how many of Capt. Kelley's ships sunk & wrecked
  - Fortunately, he was not aboard in these cases!!!
  - The Great Lakes were a dangerous place!
- Don't know much about these ships
  - What we have so far is in backup slides
  - But where were they launched?
  - Where did they sink? Where were they scrapped?
    - Schooner "Experiment" sinking account in *Manitowoc Pilot*?
  - Newspapers probably record launches & sinkings
- Shipping season was early Spring to late Fall
  - Off season: Tim Kelley was printer's devil at *Manitowoc Pilot*
  - We have newspaper-ink blood in us from way back!



# *Rising Through the Ranks*

- 1865: Civil War ends!
- 1866 (?): Able Seaman: Schooner "Naiad"
  - Possible data: Built 1863 in Huron. 311 gross tons.
- 1867 (?): Able Seaman: Schooner(?) "Suncloud"
- 1868: 2nd Mate: Barque "Charles Nims"
  - Possible Data: Bark "C.K. Nims" Built 1866, Cleveland, 700 tons.
- 1869: Mate: Barque "Charles Nims"
  - **Sank** off Bar Point in 1881
- Had dinner with Edward Nims on Wednesday
  - G-?-Grandfather "C. Nims" of Northern Ohio. Connection?

# *Technology Breakthrough*

- 1869: "R.J. Hackett" launched in Cleveland
  - (Not one of Captain Kelley's ships)
- First "pilot house forward, engine room aft" bulk carrier
  - Revolutionized lakes ore shipping
  - Ships could be quickly loaded from ore pocket docks
  - Ships no longer loaded by shovel and wheel barrow
  - Loading time reduced from days to hours
  - Still wooden hulled
- Whoa! "Loaded by shovel and wheel barrow!"
  - Coal, grains, iron ore!! That is nasty, dusty, heavy work
  - Captain Kelley lived this history!

# Master Timothy Kelley!

- 1870c., age 21: Capt. Kelley earned his master's license
  - Youngest ever on Great Lakes at the time
  - Some time in here Capt. Kelley started his journals!
- 1870: Married Anna Buggie in Chicago
  - Anna Buggie was of Manitowoc
  - Can we get a marriage newspaper clipping?
  - Who was Anna Buggie? Who was her family?
- 1870: 1st Mate: Schooner(?) "Annie Sherwood"
- 1871: 2nd Mate: Schooner(?) "Annie Vought"
- 1871: 2nd Mate: Schooner(?) "Willie Keller"
  - 1888: Willie Keller **sank** in collision
- 1871: 2nd Mate: Schooner(?) "Annie Richards"

# *Anna Buggy*



# Captain Timothy Kelley

- 1872: Captain: Schooner "C.L. Johnston"
  - "C.L. Johnston" of Peter Johnston's Fleet of Manitowoc
  - Nov. 1872: Lost big anchor and chain near Sheboygan
- 1873-1880 (?): Captain: Schooner "Thomas Howland"
  - "Thomas Howland" was of Peter Johnston's Fleet
  - Peter Johnston sold his fleet; Captain Kelley moved on
  - May 12, 1900: Howland **sank** 4 mi. out of Buffalo, holed by ice
- 1876: General Custer defeated by Sioux at Little Big Horn
- 1881: Captain: 3-masted Schooner "Wells Burt"
  - Bulk carrier launched in 1873 by Detroit Dry Dock Co.
  - Length: 212ft, breadth 34 ft, depth 14ft, tonnage 756

**An Actual Story of Captain Kelley Follows!!!!**

# *Big Blow of Oct 16, 1880(?)*

- Capt. Kelley commanding the Wells Burt
  - Buffalo to Chicago loaded w/coal on Lake Michigan
- 1. Capt. Kelley in The Burt made west shore off Kewaunee
  - But winds too hard to beat against
- 2. Capt. Kelley decided to run for shelter to Baileys Harbor
  - Big seas breaking over reefs at Baileys Harbor
- 3. Capt. Kelley made for North Bay
  - Saw 6 or 7 wrecked and stranded vessels at mouth of North Bay
- 4. Capt. Kelley headed for “the Door” for shelter under Plum Island
  - 50 to 60 vessels already anchored under Plum Island; no room
- 5. Capt. Kelley squared away for Escanaba
  - Sand Point at Escanaba; seas rolling high
  - The Burt rounded the point, but rolled so heavily, the coal shifted
  - Made port with heavy list to starboard

Could be 1881. Let's find Capt. Kelley's journal entry about this!



***SURPRISE!***

One of Captain Kelley's ships still exists!

# *The Wells Burt*

- 1873: The Wells Burt was launched
  - 3-masted schooner, bulk carrier, by Detroit Dry Dock Co.
  - Gaff rigged, square fore-sails – High tech for 1873
- 1881: Tim Kelley commanded the "Wells Burt"
- May 21, 1883: Wells Bert **sank** with all hands
  - In a storm off Evanston, Ill
  - Captain Kelley on schooner "Metacomet" that season
- 1988: Wells Bert rediscovered mostly intact
  - Over 100+ years after she was sunk!
  - Under 40 ft of water
  - Now a historical site for the State of Illinois

**I have a surprise, here . . .**



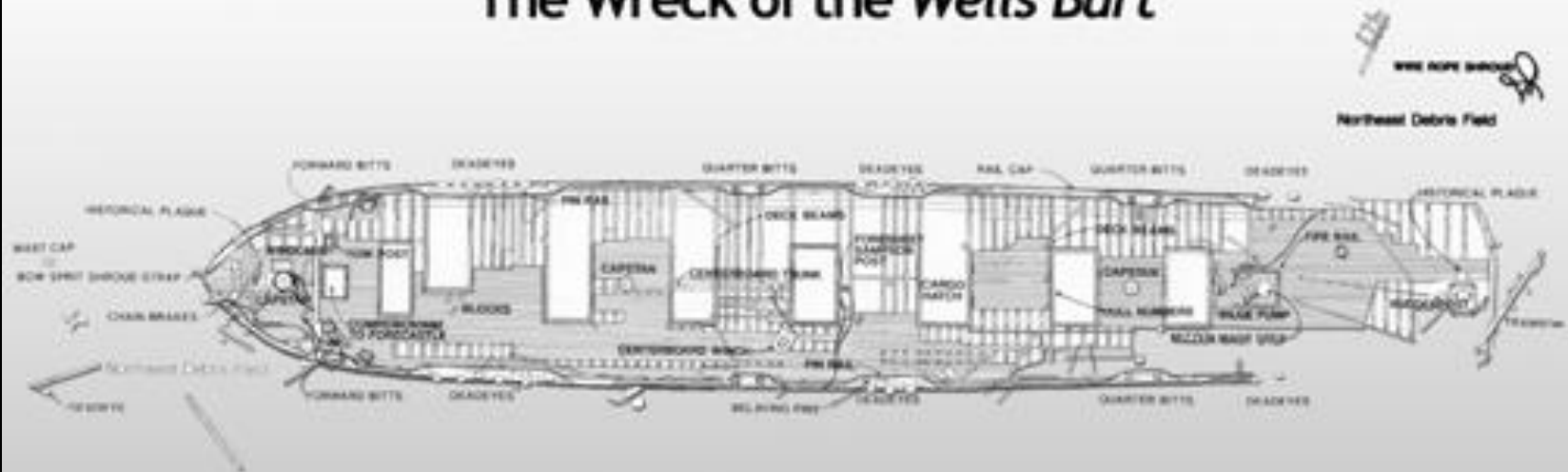
# *The Wells Burt*



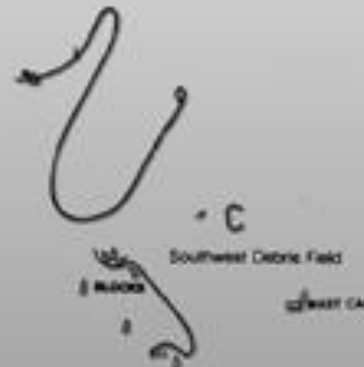
**A picture of one of Captain Kelley's ships!!!!**

# *The Wells Burt Today*

## The Wreck of the *Wells Burt*



Three-Masted Schooner, Built 1881, Lost 1883  
Located 3 Miles off Evanston by A&T Recovery  
Loran Coordinates: 33325.4 x 49677.7 - 40 feet deep  
Surveyed May-October 1969 by the Underwater Archaeological Society of Chicago  
Drawing by Valerie Olson van Heest



# *The Iron Era!*

- 1883: First iron-hulled bulk carrier, "SS Onoko," launched
  - Length: 302.5ft, beam: 38ft, depth: 20ft, 2164 g. tons
- 1882-1883: Captain: Schooner tow barge "Metacomet"
  - Capt. Kelley was still sailing wooden-hulled wind-driven ships!
- Mini-Mystery
  - "Metacomet" possibly chartered to Atlantic Transport?
    - Was Atlantic predecessor for Inter-Ocean Transport. Co.?
    - Obit says Capt. Kelley started with Inter-Ocean this year

**Another story of Captain Kelley follows!!!!**

# *Collision of Metacomet*

- May 25, 1883, Monohansett escorting barge Metacomet
  - Captain Kelley commanding Metacomet
  - Headed up Lake Michigan towards Escanaba to pick up load of ore
- Schooner Metropolis set out from Bark River
  - Headed to Grand Haven with load of cedar ties
- Dense fog
- Metropolis passed through “The Door”
  - On collision course with Monohansett
- Metropolis sounds whistle; Monohansett reverses engines
- Monohansett collides with Metropolis, then backs off
- Metacomet maintains momentum, collides with Metropolis, same spot
- Metropolis remained afloat and was towed to Chicago for repairs
- Minimal damage to Monohansett and Metacomet

# *The Captain's Steam Era!*

- Need to check Captain Kelley's logs on collision!
  - What was his version of the events?
  - Check spelling. Is it Meticomett or Metacomet?
- 1884, age 34: Captain Kelley commanded first steam ship
  - Was collision a reason for Capt Kelley going to steam?
  - Metacomet could not "reverse engines"

# *Commanding Steam Ships*

- 1884(?)-1889(?): Captain: "SS Massachusetts"
  - Ore carrier for Inter-Ocean Transportation Co.
  - 1923: **wrecked** on Lake St. Louis, St. Lawrence River
- 1887: First steel-hulled bulk carrier, "SS Spokane"
  - Launched at Globe Shipbuilding Co. in Cleveland, Ohio
- 1890-1904 (?): Captain: "SS Manchester"
  - Captain Kelley commanded Manchester for 15 years
  - Ore carrier built for Inter-Ocean Transportation Co.
- 1905-1915: Captain: "SS Maryland"
  - Captain Kelley commanded Maryland for 11 years
  - **Flag ship** of Inter-Ocean Transportation Co.

More information on these ships in backup slides



***SURPRISE!***

We have a photograph of one of Captain Kelley's steam ships!

Not just similar ship, but **THE** ship Capt. Kelley commanded

# *SS Manchester*

SS Manchester renamed SS Joseph W. Simpson in 1921



Launched May 4, 1889. Laid up: 1959. Scrapped: 1960.

J.A. Harris Collection: <http://www.sea-corps.com/josephsimpson.jpg>



# *SS Maryland*

Kew! 1890 was a year Captain Kelley commanded her!



GREAT LAKES STEAMSHIP MARYLAND, 1890.

# *Retirement*

- 1916, age 67: Captain Kelley retired from Great Lakes . . .
  - but disliked idleness
- Date unk.: Ferried/delivered ships to Boston
  - Steam trawlers & other craft from Manitowoc Ship Yards
  - Master to Montreal; Builder's delivery agent in Boston
- 1917-1918: The United States enters World War I
- Date unk.: Captain: Tug "Butterfield" Two seasons
  - Launched 1919 by Bethlehem Steel Co., Elizabeth, NJ, US 218244, Hull Number 2130
  - Length: 149ft, Beam 27ft 8in, Draft 15ft
  - 436 gross tons, 296 net tons, triple reduction steam
- 1922: Capt. Kelley's last service on Great Lakes at age 73

# *The Tug “Butterfield”*

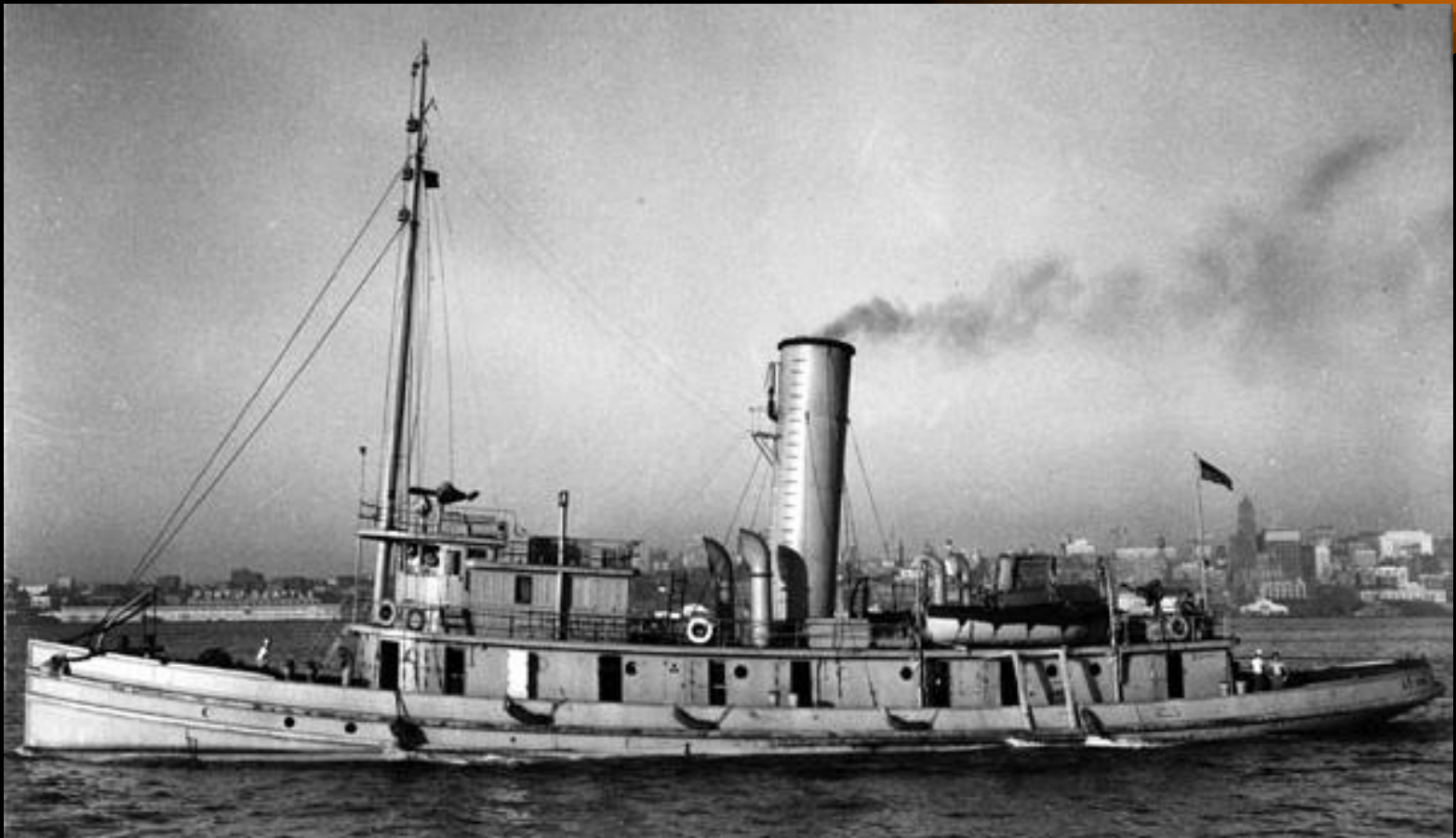


Photo Courtesy of the Door County Maritime Museum

## *Mini-Mystery*

- 1919: Tug Butterfield launched for U.S. Navy
- 1922: Tug Butterfield in commercial service
- 1922: Captain Kelley retired (again) at age 73
- Yet Captain Kelley commanded Butterfield 2 seasons
  - 1922 and ??
  - 1923? – So Captain Kelley did not retire until 1923?
  - 1921? – So the history of Butterfield should be updated to 1921 commercial service?
- So, was the Butterfield Captain Kelley's last command?
- Need to check Captain Kelley's journals

# *The End*

- **1927: Anna (Buggie) Kelley died**
- 1941: The United States enters World War II
- April 13th, 1943: Capt. Kelley died at age 94
  - At home: 630 North Seventh Street, Manitowoc, Wi.
  - Where he lived with his daughter's family, Mrs. M. J. Ryan
  - Buried in Evergreen Cemetery
  - He had 15 grandchildren and 7 great-grandchildren on his death

My father, Dr. Robert A. Kelley,  
one of Captain Kelley's grandchildren  
is here with us today!



# *The Tree from There*

- Two sons preceded Captain Kelley
  - Charles Kelley
  - Edward Kelley
- Survived by
  - Mrs. M. J. Ryan of Manitowoc
  - Manitowoc Postmaster Harry F. Kelley (my grandfather)
  - Kenneth Kelley of Manitowoc
  - Dr. John M. Kelley of Cato
  - Timothy Kelley, Jr. of Beloit
- Can we get biographies on these folk for the web site?
  - To whom were they married? Biographies?

**BUT WAIT! I have another surprise!!!!**



One of Captain Kelley's ships . . .

***IS STILL AFLOAT!***

# *Tug “Butterfield” Today*

- 1957: Tug “Butterfield” renamed “John Purves”
- 2003: Tug “John Purves” donated to
  - Door County Maritime Museum
  - At Sturgeon Bay! 59 miles from Manitowoc!
  - Fully restored to Roen Steamship Company colors
- **AND NOW . . .**  
**LADIES AND GENTLEMEN . . .**  
**I GIVE YOU . . .**  
**THE TUG “BUTTERFIELD!”**



# *Tug “Butterfield” Today*



in the Door County Maritime Museum

Photo Courtesy of the Door County Maritime Museum

# *Door County Maritime Museum*

- Member: Historic Naval Ships Association
- <http://www.dcmmm.org/>
- Membership available online!
  - Captain: 1 adult, 1 year = \$35
  - Mate: 2 adults, 1 year = \$55
  - Crew: 2 adults + children to age 18: \$65
  - Sustaining: 2 adults + donation: \$250
  - Lifetime, Individual: \$750
  - Lifetime, Family: \$1000
- Group tours available
  - Let's invade sometime!



More information after this slide, so as not to bore the audience

***BACKUP SLIDES***

# *The Journal Project*

- Captain Kelley's journals are in the custody of the
  - Wisconsin Maritime Museum in Manitowoc, WI
  - <http://www.wisconsinmaritime.org>
  - MS 22 – General Manuscript Collection
    - MS 22.38 – Timothy Kelley Family
- Proposed project Phase I:
  - Take a laptop and portable scanner to the museum
  - Scan all Captain Kelley's journals to .pdf files
- Proposed project Phase II:
  - Transcribe Captain Kelley's journals to electronic form

# *Social Perspective*

- Did Captain Kelley leave home to support the family?
  - Was his mother remarried when he left home?
- This was the Civil war
  - These were ROUGH times for the U.S.!
- Note: No child labor laws were in effect
  - What does an immigrant widow with 5 children do?
  - People were poor! Education was a luxury
  - Everyone had to work
- —BUT! Do not think Captain Kelley was unlearned!
  - He was a voracious reader
  - He was VERY much a self-made man
  - Kept a journal from age 21 (or earlier) until his death

# *Steamer Cleveland*

- Likely data: Sidewheeler
  - Cost \$22,500, machinery cost \$50,000 more
    - A large schooner cost between \$6,000 and \$10,000
  - 579 tons burden
  - Length: 180' Beam 28' Depth 11'
  - Low pressure steam: 10" dia x 10 ft. stroke
- Several vessels by that name
  - Beware of the propeller “City of Cleveland” built in 1860

# *History of the Cleveland*

- 1837: Launched in Huron, June 24<sup>th</sup>, by Pease, Griffith & Company
- 1837: Finished in Cleveland, October
- 1847: Rammed by unidentified schooner, Aug 24<sup>th</sup>
  - Islands near Buffalo, NY
  - Aug 28<sup>th</sup>: schooner later identified as the Mohegan
- 1853: Collision with Schooner Luther Wright, May 30
- 1854: Burned at Tonawanda, NY, no lives lost
- 1855: Burst condenser near Green Bay, Jan
- 1856: Reference to steamer Cleveland “of Manitowoc”
- 1857: Arrived in Queen Bay after big storm
  - Fires put out several times, much flooding, passengers at pumps
- 1858: Broke crank, towed to Milwaukee, Sep 1
- 1958: Collision with Schooner Fred Hill, Buffalo, Nov 22

Very confusing history. Several ships named “Cleveland.”

# *Captain Kelley as Cabin Boy*

- 1862 through 1865 (during the U.S. Civil War)
  - Schooner "Ellen"
    - 64.34 tons
  - Schooner "Free Mason"
    - 35 tons
    - Scow.
    - Built 1857 in Black River, ON
    - **Sank** in 1867 in the Detroit River, 3 lives lost
  - Schooner "Erie,"
    - 61 tons
    - 60'x18'x6.9'
    - **Wrecked** 1868



# *Captain Kelley as Cabin Boy*

- 1862 through 1865 (continued)
  - Schooner(?) "Wayne"
    - 334 tons
    - **Sank** in 1877 at Oswego
  - Schooner "Experiment"
    - **Wrecked** in Manitowoc in 1864
    - Was Capt. Kelley aboard?
  - Schooner(?) "Board of Trade"
  - Schooner(?) "William Quage"

# *Metacomet*

- 1882-1883: Captain: Schooner tow barge "Metacomet"
  - Possible data: Built 1880 in Detroit, Michigan
  - 852.95 tons gross; 819.27 tons net
  - Length: 176.0' Beam: 34.1' Depth: 17.6'
  - Formerly named "Iron State," U.S. No. 100255
  - Capt. Kelley was still sailing wooden-hulled wind-driven ships!
- "Metacomet" possibly chartered to Atlantic Transport?
  - Was Atlantic a predecessor for Inter-Ocean Transport Co.?
  - Obit says Capt. Kelley started with Inter-Ocean this year

# *SS Massachusetts*

- 1884(?)-1889(?): Captain: "SS Massachusetts"
  - Ore carrier built for Inter-Ocean Transportation Co.
  - In 1882 by Detroit Dry Dock, Detroit, Michigan
  - Maiden voyage ended in Chicago on May 1, 1882
  - Hull # 54D, Wood hull?, U. S. No. 91416
  - 1,415 gross tons. Length: 235ft, Beam 37ft, Depth 18ft
  - One of largest ships on Great Lakes at time
  - "the steam craft for this line" – the only steam ship for the line?
  - 1913: Canadian registry C130927, home port Montreal
  - 1915: Renamed Compton
  - 1923: wrecked on Lake St. Louis, St. Lawrence River

# *SS Manchester*

- 1890-1904 (?): Captain: "SS Manchester"
  - Captain Kelley commanded Manchester for 15 years
  - Ore carrier built for Inter-Ocean Transportation Co.
  - In May 4, 1889 by Wyandotte Shipbuilding, Wyandotte, Michigan
  - Composite hull: Iron frames w/wood planking
  - Hull # 91W, U. S. No. 92087
  - 2132 gt - 1611 nt 281' x 41' x 20'
  - 1,200 i.h.p. (883 KW) triple expansion steam
  - 2 coal-fired scotch boilers.

# *SS Manchester History*

- 1906: June 17: Manchester rams Steel King
  - in fog on Lake Huron
- 1921: Renamed Joseph W Simpson
- 1922: Shortened to 256' 09" x 41' 00" x 22' 06", 1,813grt
- 1928: Converted to crane ship
- 1938: Renamed Mindemoya (Canadian C 170256)
  - Albatross Steamship Co., Montreal, Que
- 1946: Renamed Yankcanuck
  - by Capt. Frank Manzzutti, Yankcanuck Steamship Co.
- 1959: Laid up. 1960: Scrapped.
- Last composite ship on Lakes

# *SS Maryland*

- 1905-1915: Captain: "SS Maryland"
  - Flag ship of Inter-Ocean Transportation Co.
  - Captain Kelley commanded her for 11 years
  - Possible data:
    - Built in June 1890
    - by Wyandotte Shipbuilding, Wyandotte, Michigan
    - For Dakota Transit
    - Hull #103W
    - 2,419 gross tons
    - Sank in 1916

# *Butterfield History*

- 1919: Built for WWI: Named “Butterfield”
  - Hmmm. Built in 1919 for WWI, which ended in 1918??
  - Served in U.S. Navy as floating radio station in Caribbean
- 1922: Commercial tug service on Great Lakes
  - Sometime in here was when Capt. Kelley commanded her
  - Towed rafts from N. shore of Lake Superior to Ashland
- 1942-1945 – Returned to Navy as Large Tug 145 (LT-145)
  - Served in Aleutian Islands, supplying Army garrisons
- 1945: Returned to commercial tug service on Great Lakes
- 1957: Re-powered to two GM diesel engines
  - Renamed “John Purves”